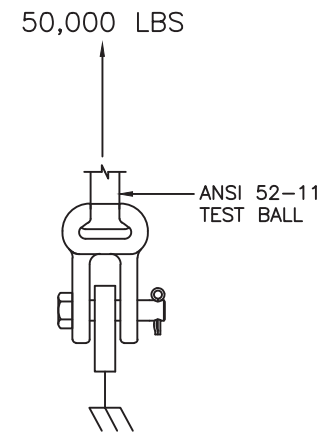
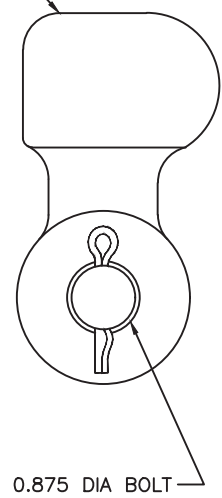
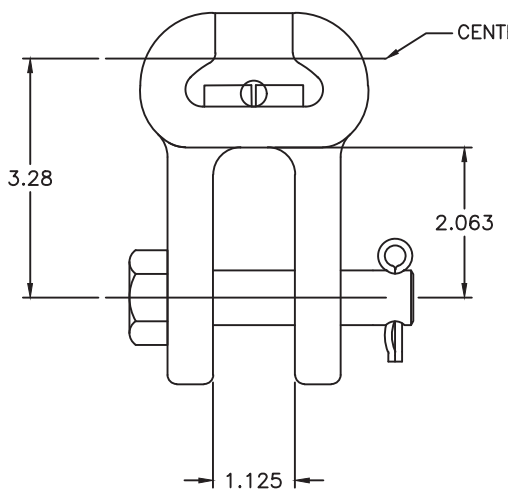


CLASS 52-11 INSULATOR SOCKET



ULT LOAD DIAGRAM

NOTES

1. MATERIAL: BODY GALV. DUCTILE IRON
BOLT AND JAM NUT--GALV STEEL
COTTER PINS--STAINLESS STEEL
SHIELD NUT--ALUMINUM
2. DIMENSIONS IN INCHES
3. FOR SHIELD NUT - ADD SUFFIX 'SN'
TO CATALOG NUMBER.
4. FOR BOLT NUT AND COTTER PIN - ADD SUFFIX 'BNK'
TO CATALOG NUMBER.
5. WEIGHT 4.72 lbs

EC #	DATE	CHG BY	RESP ENG
---	---	---	---
PRELIMINARY ONLY			
DESC OF DWG: ---			
REASON (S) FOR CHANGE: ---			
DISPOSITION OF MAT'L: ---			

ANDERSON
TOLERANCE CHART

CONFIDENTIAL: THIS DRAWING AND ITS CONTENTS ARE CONFIDENTIAL AND THE EXCLUSIVE PROPERTY OF HUBBELL POWER SYSTEMS. NO PUBLICATION, DISTRIBUTION OR COPIES MAY BE MADE WITHOUT THE WRITTEN CONSENT OF HUBBELL POWER SYSTEMS. HUBBELL POWER SYSTEMS UNPUBLISHED. ALL RIGHTS RESERVED UNDER THE COPYRIGHT LAWS.

HUBBELL POWER SYSTEMS			
TITLE 50K LBS ULT. SOCKET CLEVIS			
SIZE A	DWG NO. CUTSHEET	CAT / PART / ASSY NO. SC501	REV C
DO NOT SCALE THIS DRAWING	DRN BY MAN	DATE 06/03/13	SHEET 1 OF 1